

FIVE RIVERS METROPARKS

**WESLEYAN METROPARK ADVENTURE CENTRAL
KITCHEN MODIFICATIONS AND UPGRADES PROJECT
BID NO. 20-003
Bid Addendum No. 04
March 26, 2020**

TO: ALL PLANHOLDERS

This Bid Addendum No. 04 amends the Bid Documents, Drawings, and Specifications dated January 24, 2020, as prepared by:

Five Rivers MetroParks
409 E. Monument Ave., Third Floor
Dayton OH 45402-1374
(937) 275-7275

This addendum consists of the following:

Changes to the Contract Requirements –

1. SECTION 114000 – FOOD SERVICE EQUIPMENT – 3.11 EQUIPMENT
SCHEDULE/SPECIFICATIONS – ITEM NO. 7 – VEGETABLE PREP TABLE

Provide the following faucet for the double sink. "T&S Brass Model B-5125-12-BJ, Fisher, or Chicago pre-rinse assembly equipped with an 8" wall mount workboard faucet, polished chrome plated brass body and escutcheon, add-on faucet with compression cartridge with spring check and lever handle, 12" swing nozzle with stream regulator outlet, 18" riser, 44" flexible stainless steel hose with heat resistant handle, 1.07 GPM spray valve, compression cartridges with spring checks, lever handles, in-line vacuum breaker, 1/2" NPT male inlets, 6" adjustable wall bracket, spray valve holder, and an overhead spring. Unit shall be certified to ASME A112.18.1/CSA B125.1, NSF 61-Section 9 & NSF 372, and EPA Act 2005 Compliant."

2. SHEET A-131 – REFLECTED CEILING PLAN AND ROOF PLANS – DETAIL 6 – ROOF CURB DETAIL

New detail added for roof curb. Detail reference added to Roof Plan. See revised drawing A-131, dated 3/25/20, attached to this addendum as Appendix A.

3. SHEET A-201 – BUILDING ELEVATIONS – DETAIL 4 – WALL SECTION

Added notation of building wrap. See revised drawing A-201, dated 3/25/20, attached to this addendum as Appendix B.

4. SHEET Q-101 – FOOD SERVICE EQUIPMENT PLAN – DETAIL 2 – VEG PREP TABLE

Delete disposer and all components related to disposer from VEG PREP TABLE. Disposer and components are shown graphically but are not noted. Equipment and connection schedules are correct and do not include any reference to disposer.

5. SHEET Q-103 – FOOD SERVICE EQUIPMENT HOOD DETAILS – HOOD SCHEDULE

Revise H-1 SUPPLY CFM to "(4) 371" and SUPPLY AIR DUCT VELOCITY to "472 FPM".

6. SHEET P-101 – FLOOR PLAN – PLUMBING – DETAIL 2 – GAS-FIRED WATER HEATER

Delete TMV1 from water heater detail.

END OF BID ADDENDUM NO. 04

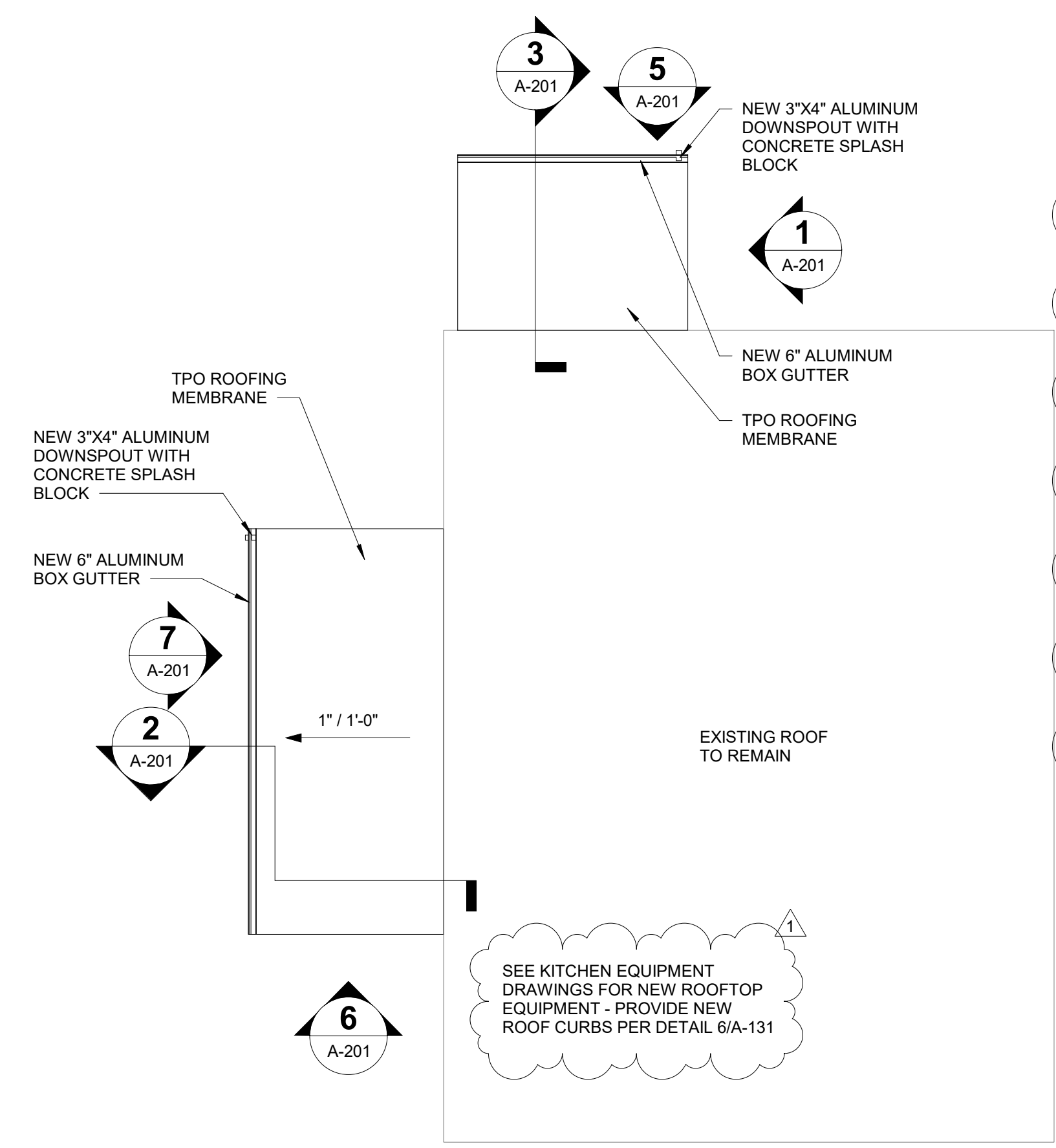
REFLECTED CEILING AND ROOF PLANS
FIVE RIVERS METROPARKS
ADVENTURE CENTRAL - KITCHEN
MODIFICATIONS & UPGRADES
2222 JAMES H. MCGEE BLVD - DAYTON, OHIO

REVISION INFORMATION		DESCRIPTION
REV	CHK	DATE
1	TJF	03/25/2020
	TJF	APPENDIX 04 APPENDIX A

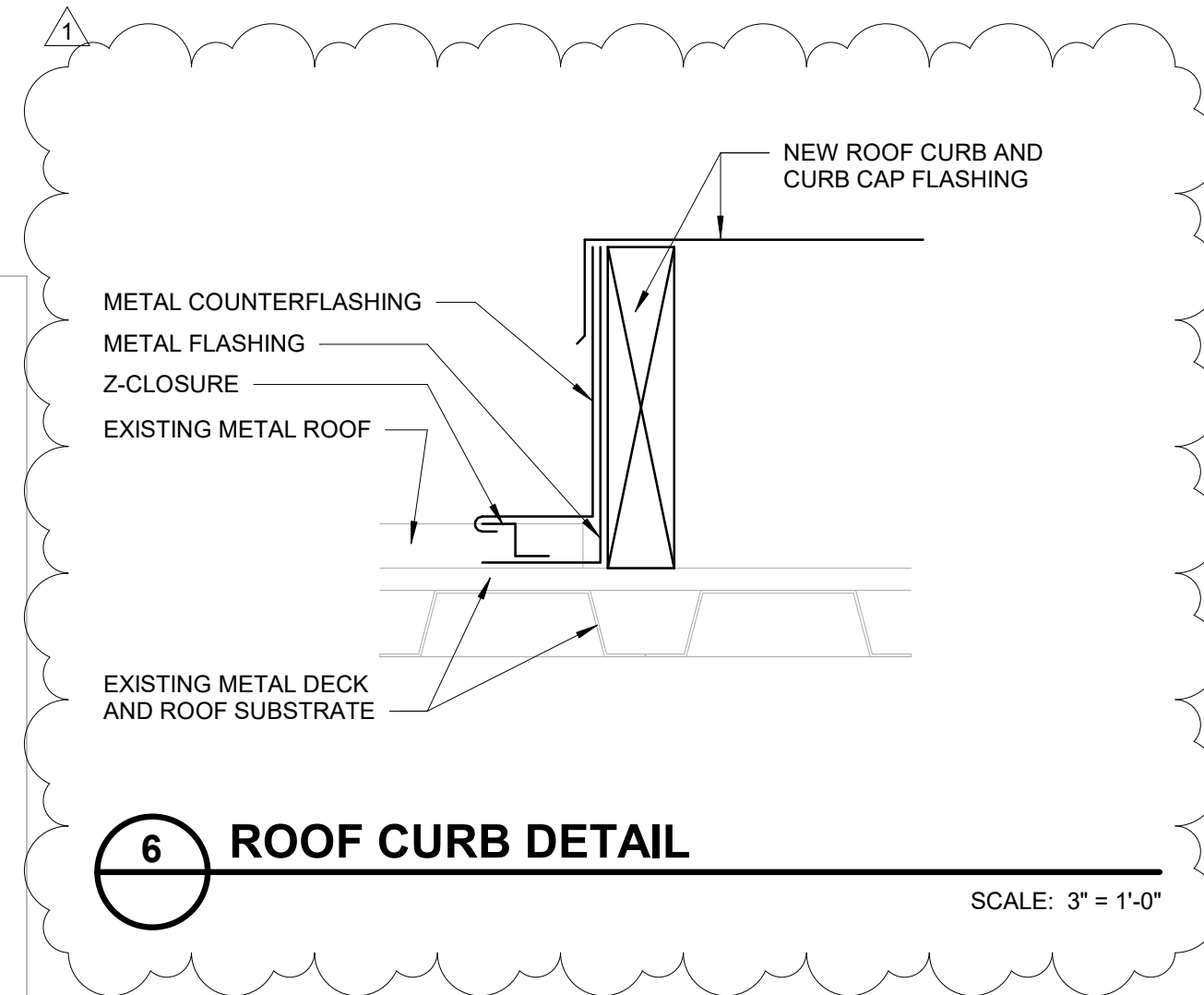
A-131
FILE NO. 3695800



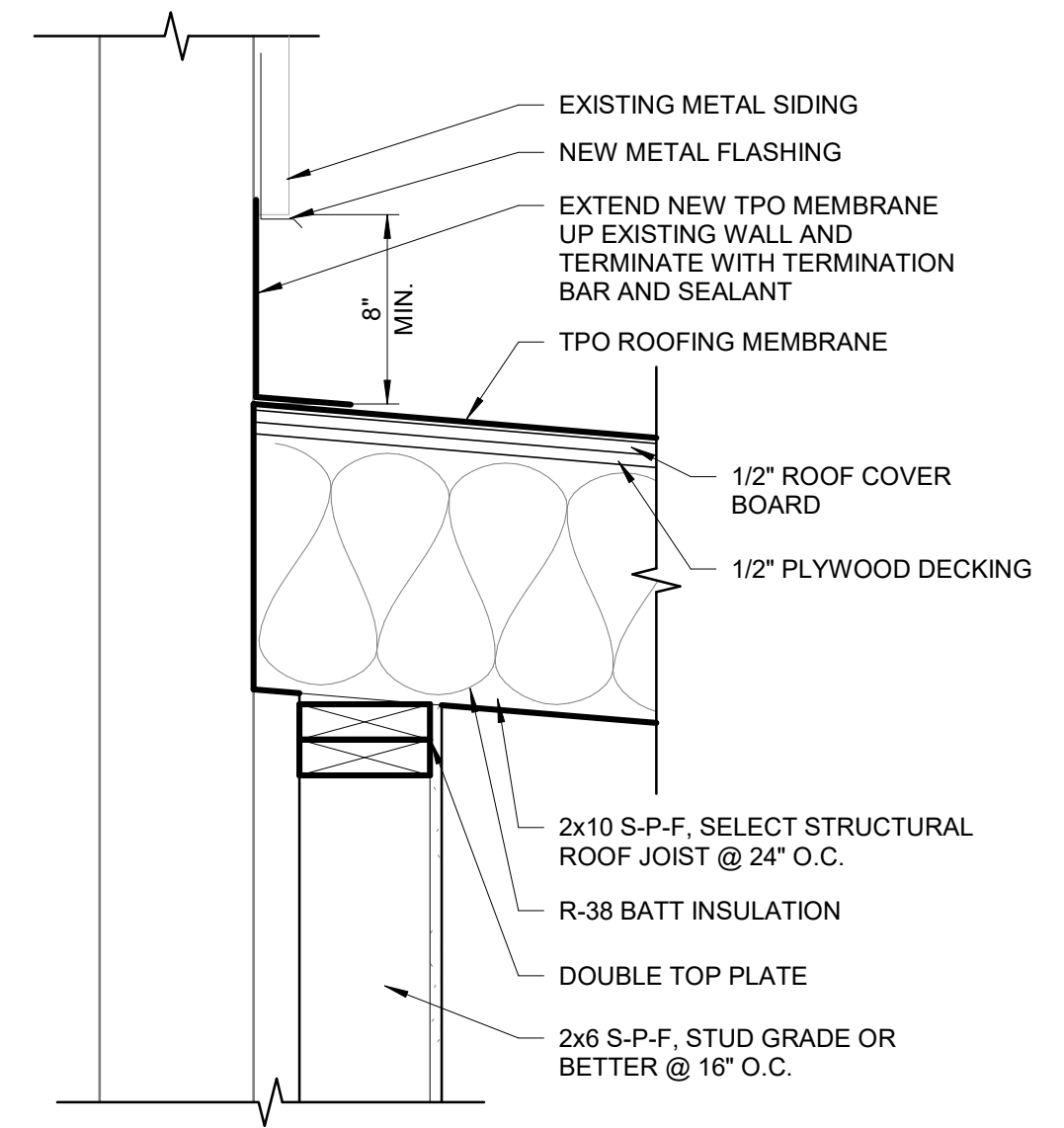
1 REFLECTED CEILING PLAN
A-131
SCALE: 1/4" = 1'-0"
PLAN NORTH



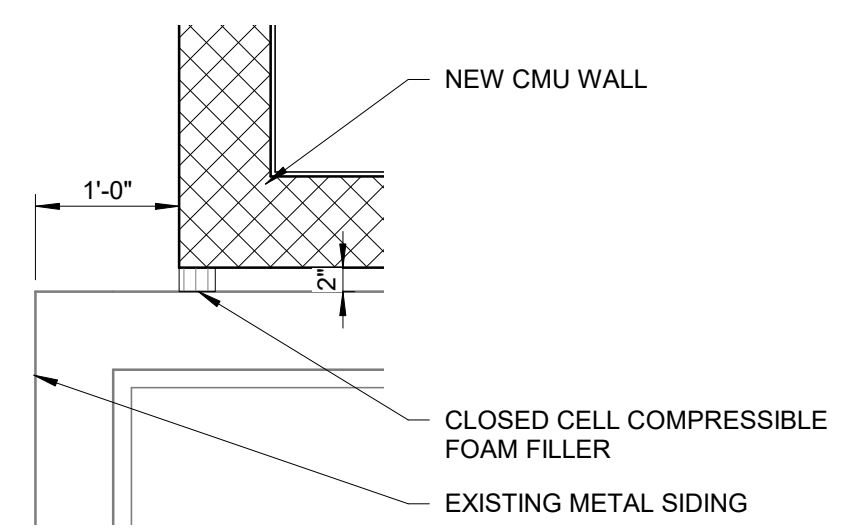
2 ROOF PLAN
A-131
SCALE: 1/8" = 1'-0"
PLAN NORTH



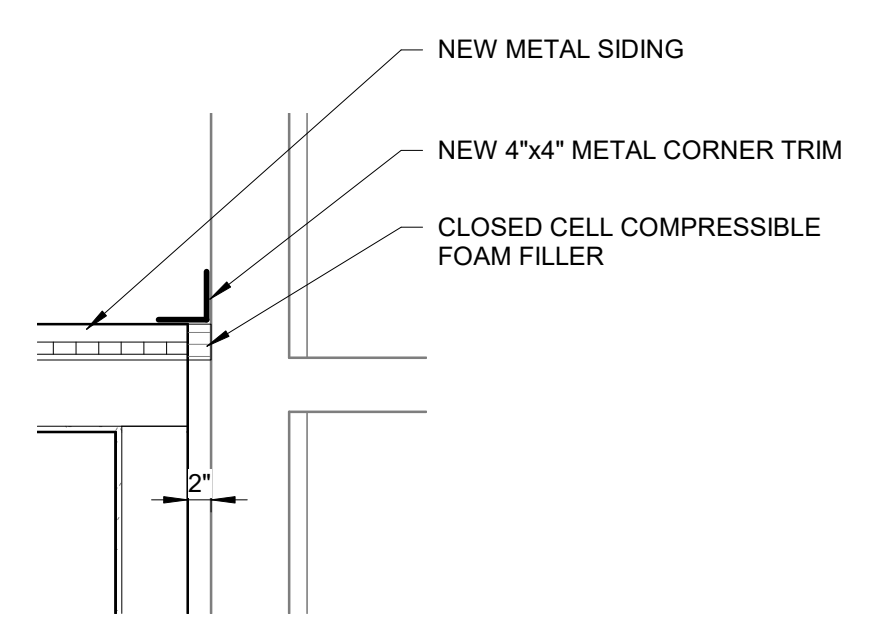
6 ROOF CURB DETAIL
SCALE: 3" = 1'-0"



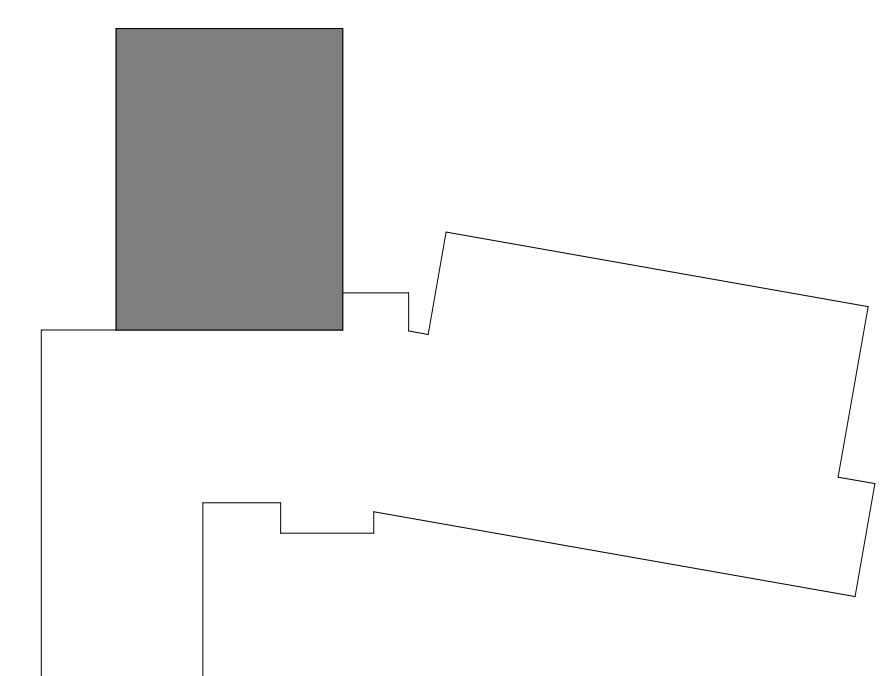
5 FRAMING DETAIL
A-201
SCALE: 1 1/2" = 1'-0"



3 CMU CORNER DETAIL
A-101
SCALE: 3/4" = 1'-0"

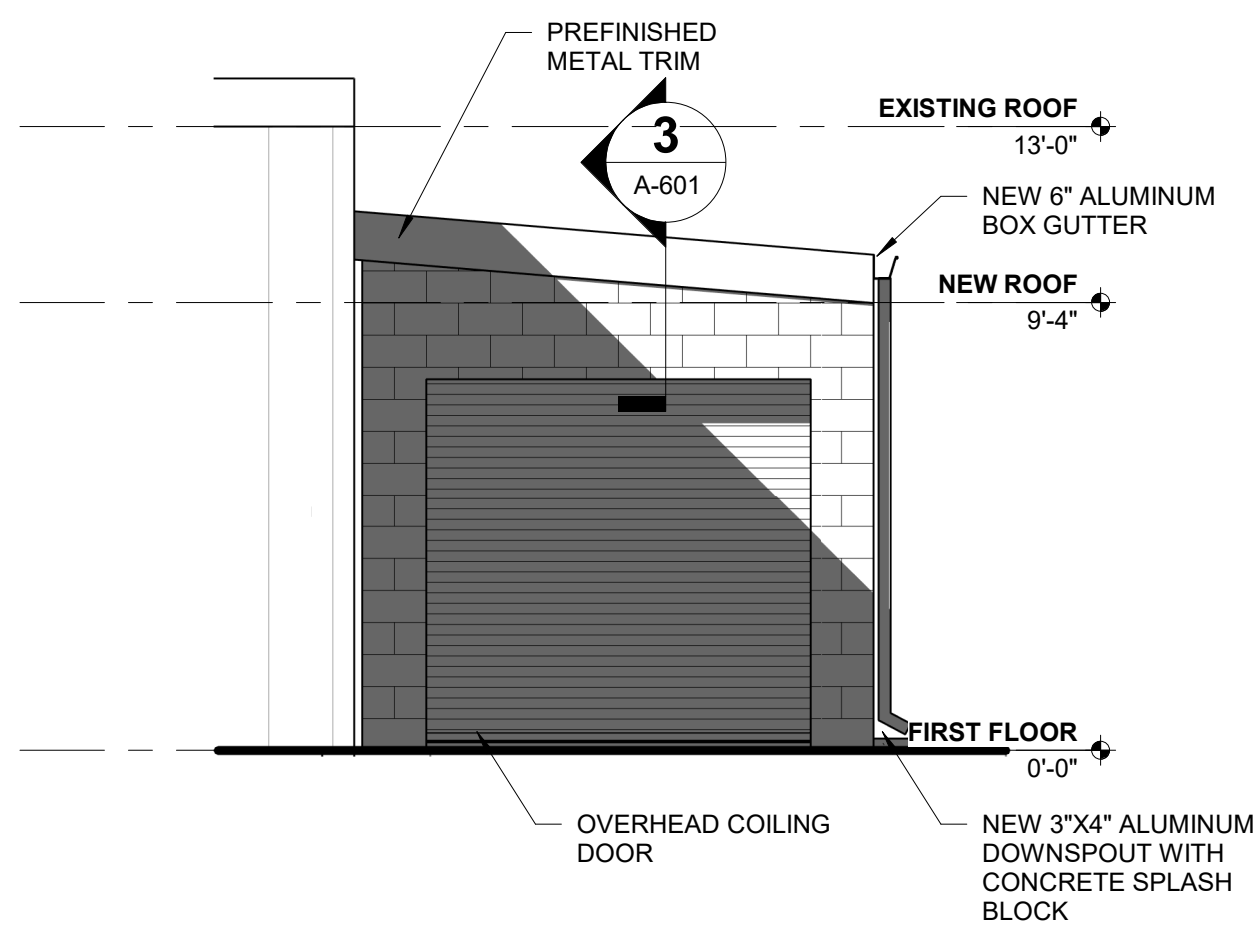


4 NEW WALL CORNER DETAIL
A-101
SCALE: 3/4" = 1'-0"

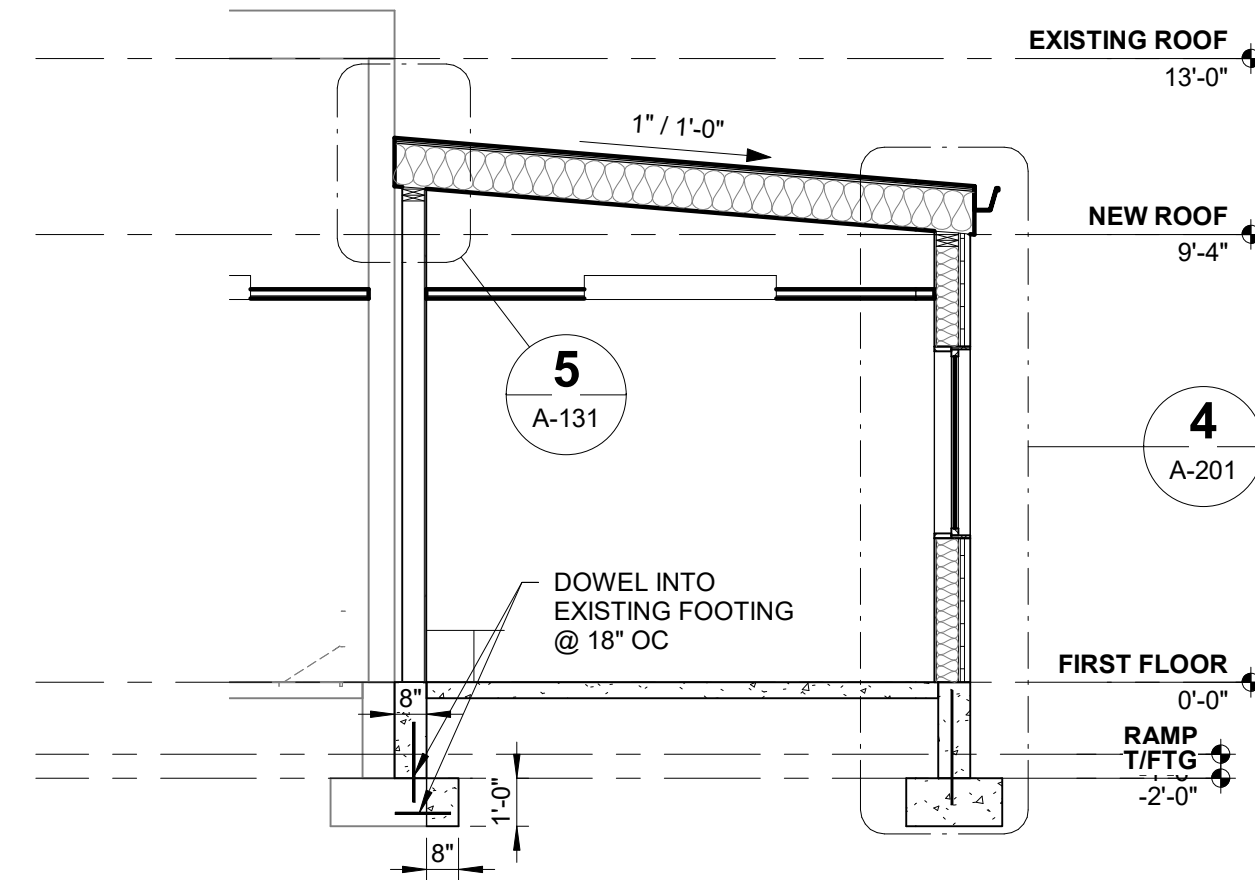


KEY PLAN ①

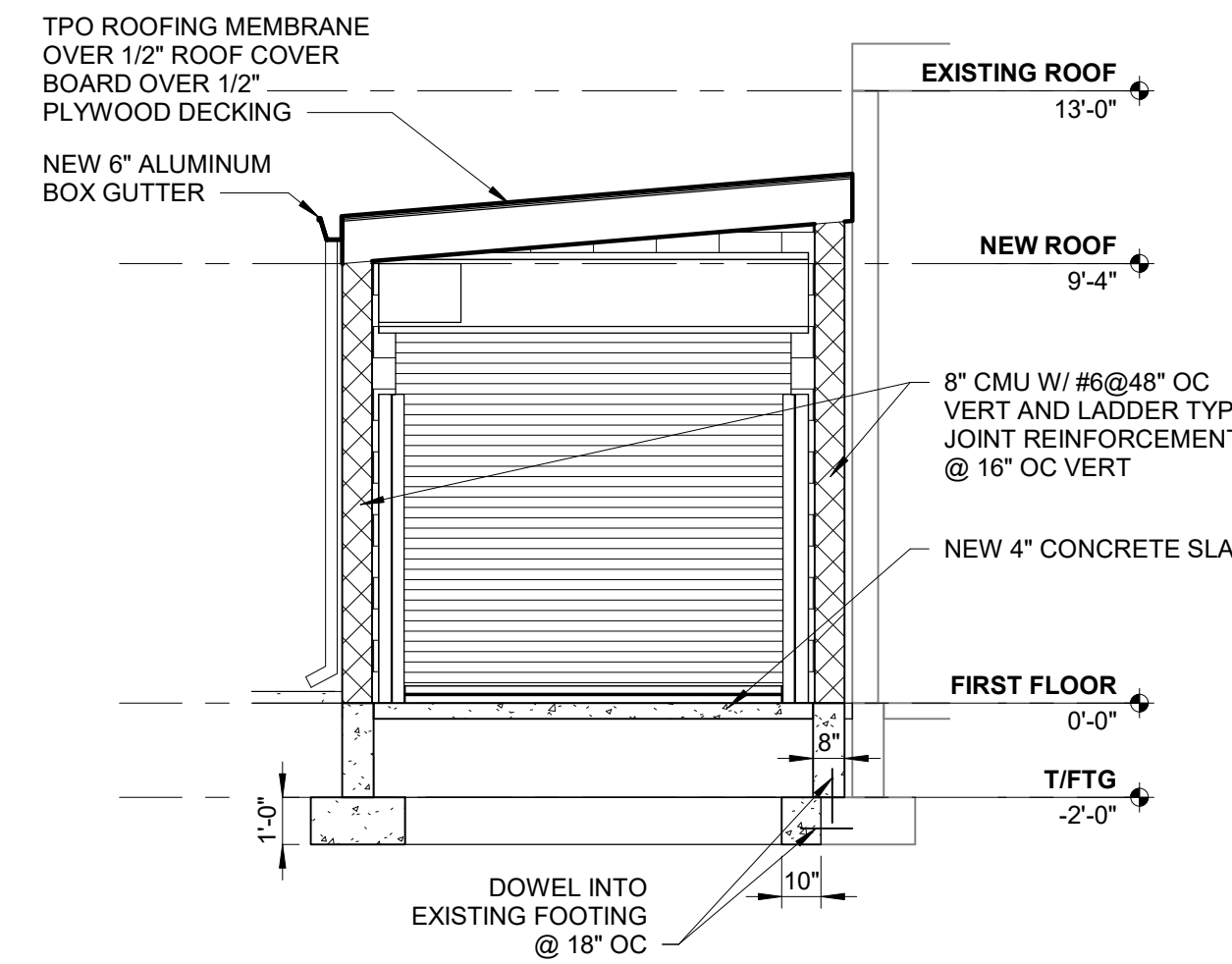
Drawing: A-131 - REFLECTED CEILING AND ROOF PLANS
Title/Date: 3/25/2020 10:07 AM
User: mmma001/CEN_AC_v18_1m_bmyw/F01.rvt



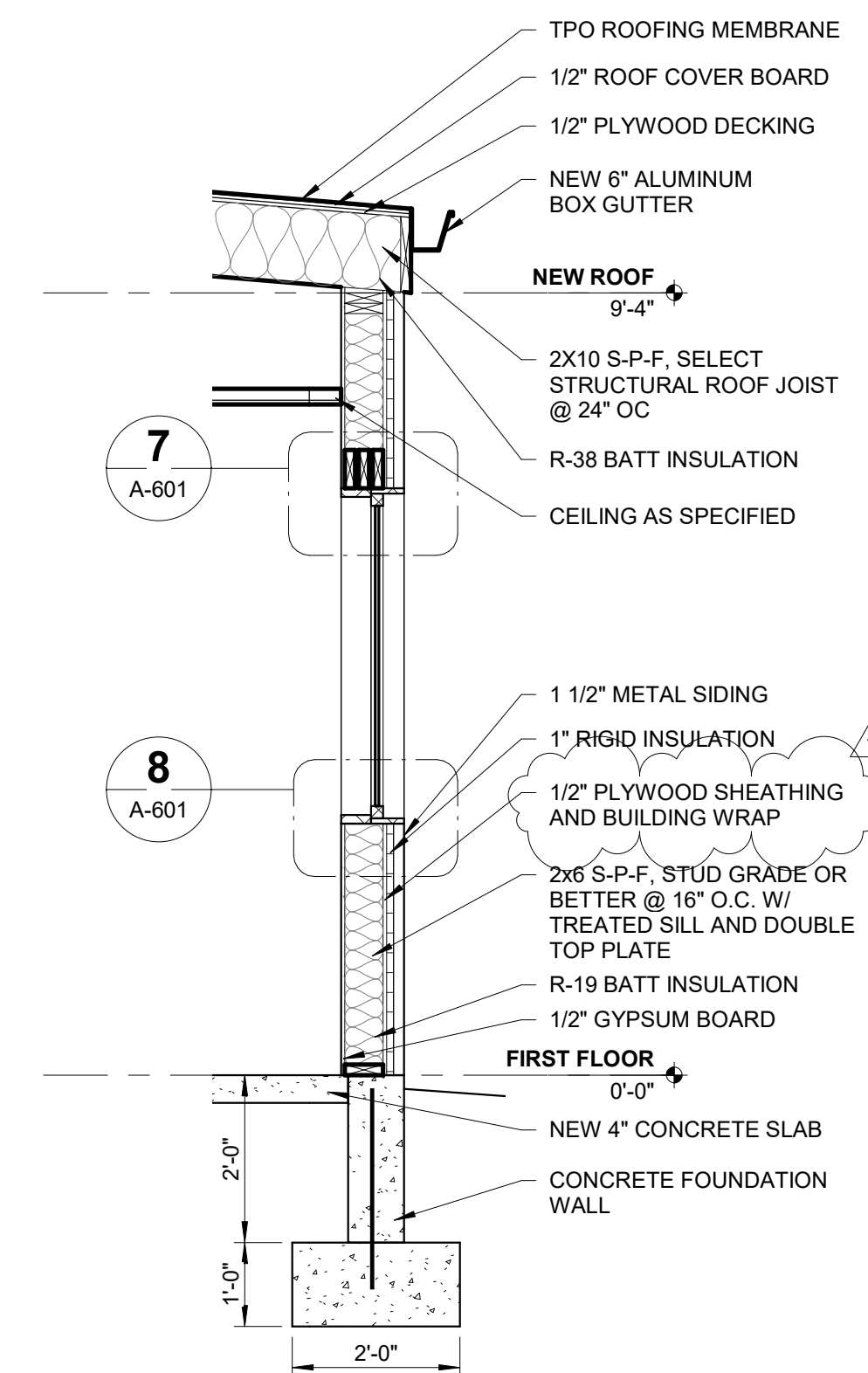
1 EAST ELEVATION
A-101 SCALE: 1/4" = 1'-0"



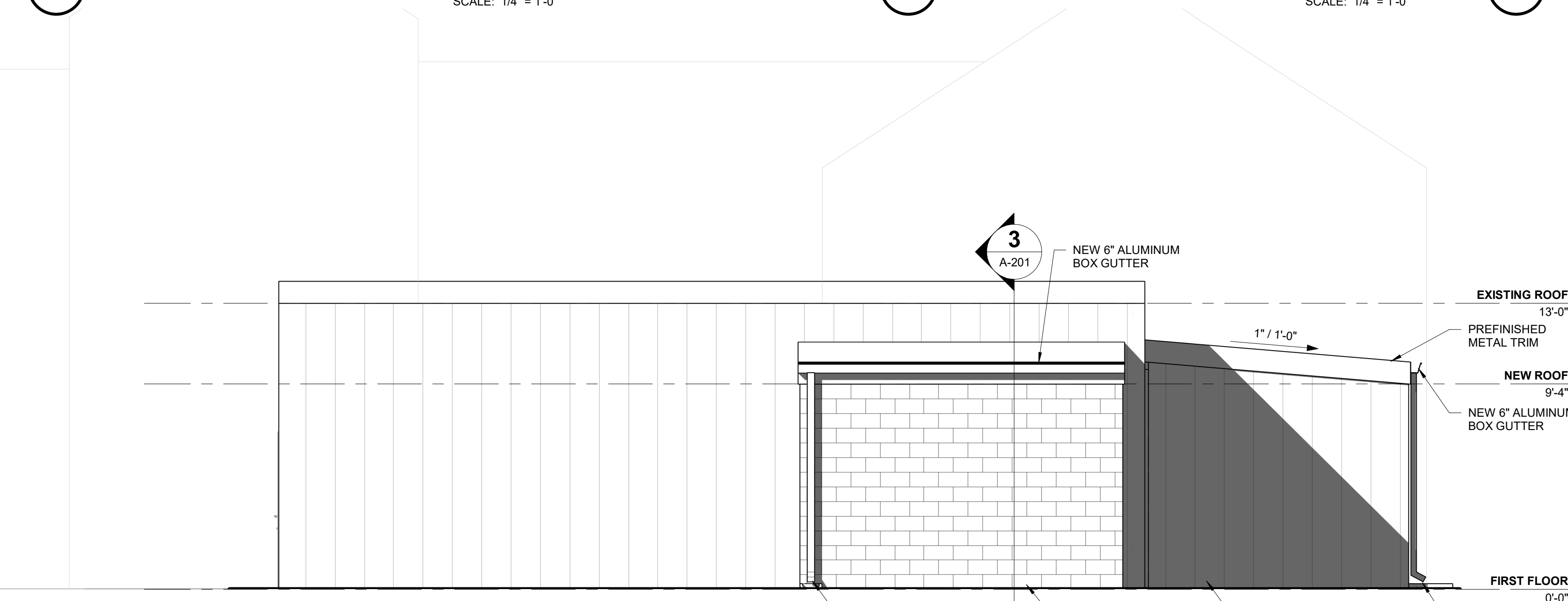
2 BUILDING SECTION
A-101 SCALE: 1/4" = 1'-0"



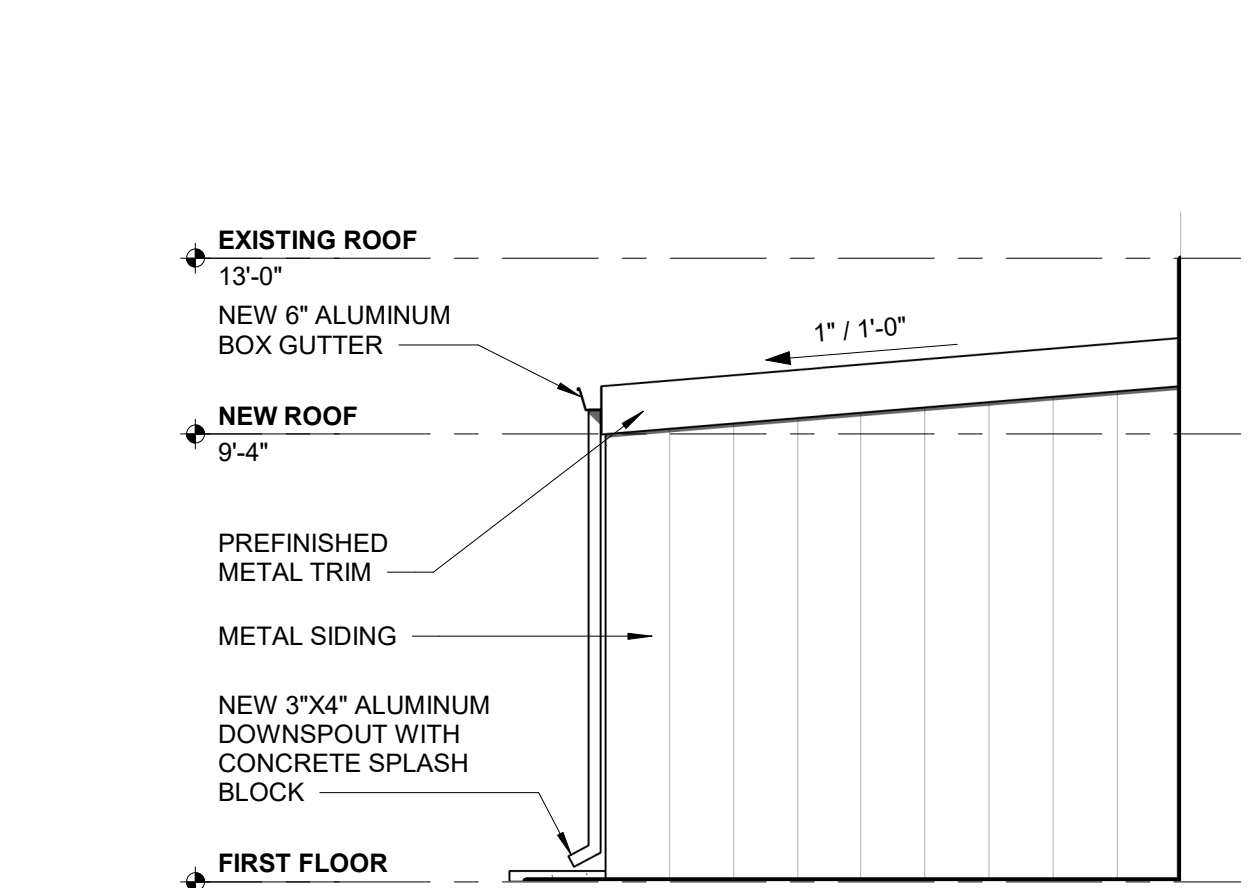
3 OUTDOOR STORAGE BLDG SECTION
A-101 SCALE: 1/4" = 1'-0"



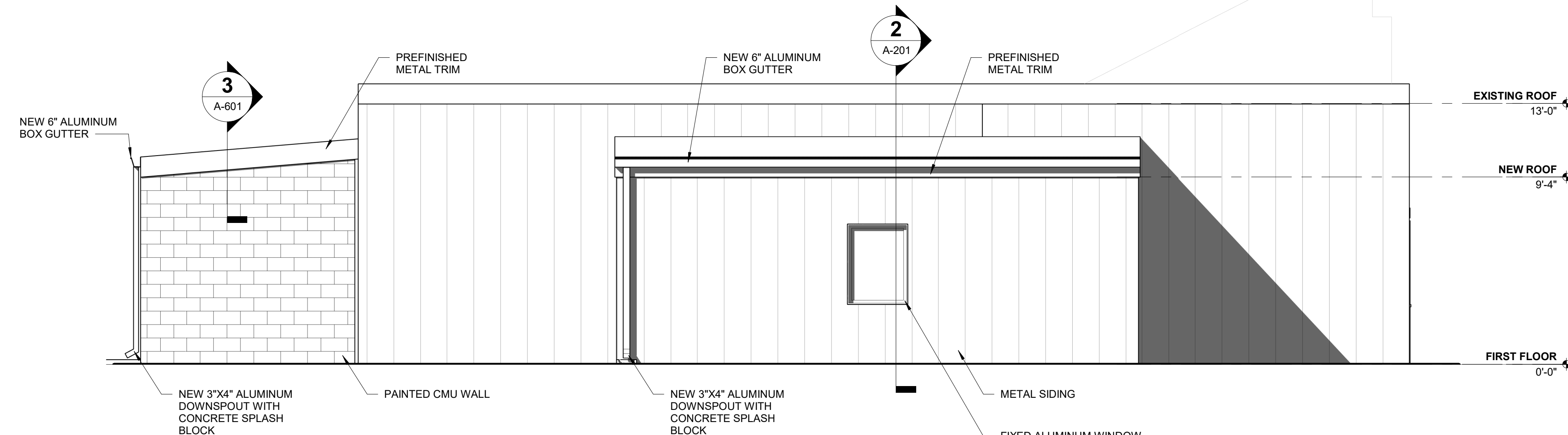
4 WALL SECTION
A-201 SCALE: 1/2" = 1'-0"



5 NORTH ELEVATION
A-101 SCALE: 1/4" = 1'-0"



6 SOUTH ELEVATION
A-101 SCALE: 1/4" = 1'-0"



7 WEST ELEVATION
A-101 SCALE: 1/4" = 1'-0"

REVISION INFORMATION		DESCRIPTION
REV	CHK	DATE
1	T.J.F.	03/25/2020
	T.J.F.	APPENDUM 04 APPENDIX B

Drawing: A-201.L BUILDING ELEVATIONS
 Title: 03/25/2020 03:17:07 PM
 User: Admin\ADMIN\ADY_CEN_AC_v18_1m_8mwyf0h.txt